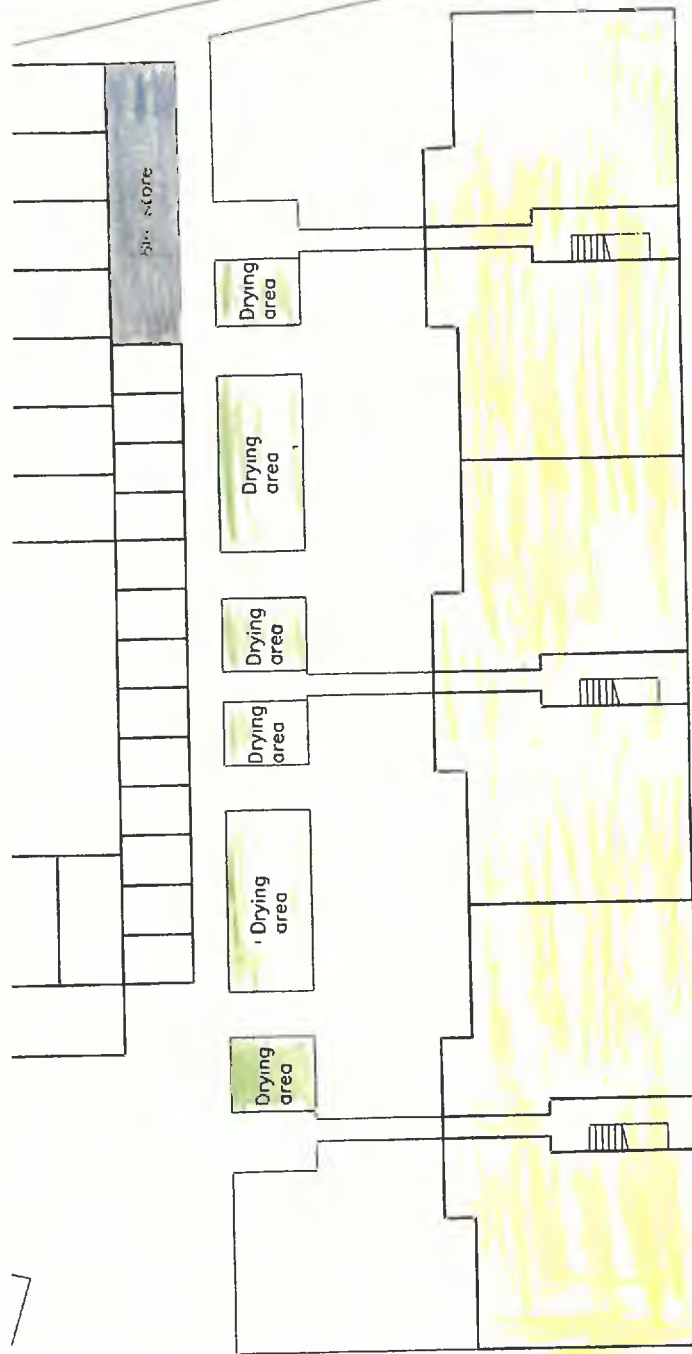
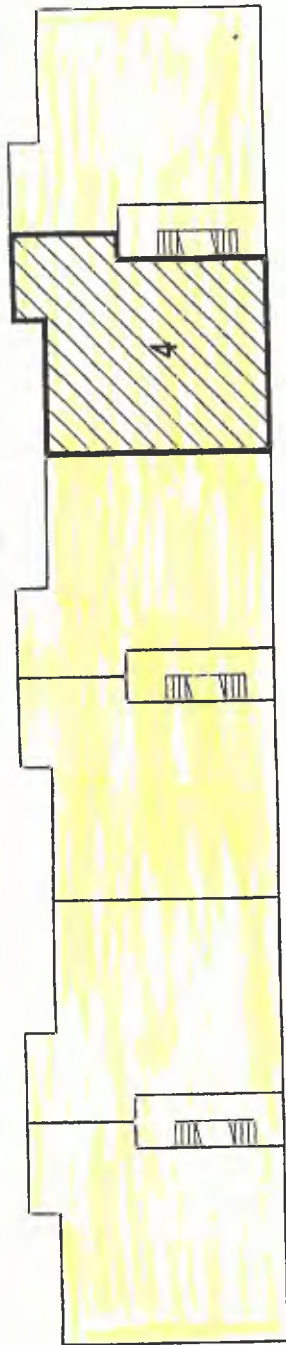




1st Floor Plan



Ground Floor Plan  
Scale 1:200

Brandon Walsh, Director of Regeneration,  
Economic Development and Environment  
Corporate Property & Project Co-ordination Division  
Regeneration, Economic Development and Environment Department  
London Borough of Hounslow  
The Civic Centre, Lampton Road, Hounslow, TW9 4DN

**London Borough  
of Hounslow**

**4, SWANN COURT, SOUTH STREET, ISLEWORTH TW7 7AN**  
**(PLAN 2 OF 2)**

RTB No. 6240

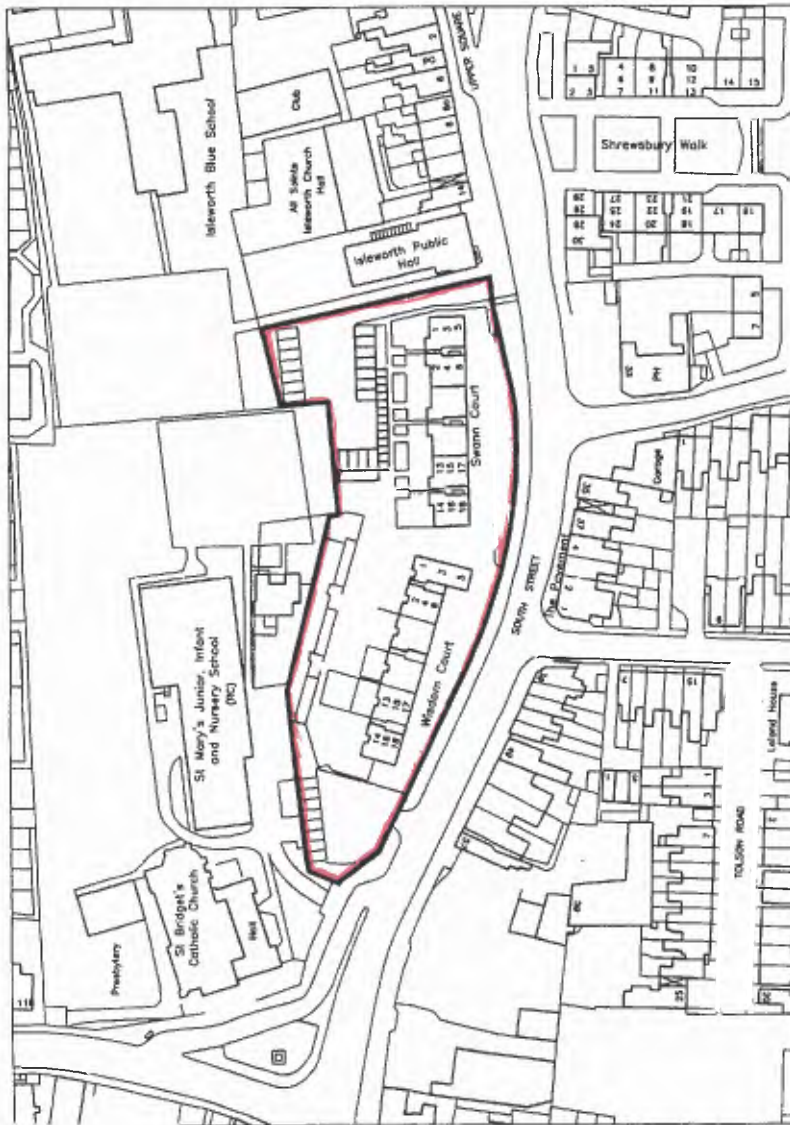
DATE: 13.11.12

This map is based upon Ordnance Survey material with the permission of the Controller of Her Majesty's Stationery Office. Crown copyright. Unauthorised reproduction infringes Crown copyright and may lead to prosecution or civil proceedings. 100019263 2013





Location of flat  
on 1st floor



Management area n.t.s.



Scale 1:200



This plan is based upon Ordnance Survey material with the  
Controller of Her Majesty's Stationery Office © Crown copyright  
Unauthorised reproduction infringes Crown copyright and may  
lead to prosecution or civil proceedings. 100019263 2013

13/1/80

AD COPELTON CO. RENOVATION

Brandon Walsh, Director of Regeneration,  
Economic Development and Environment,  
Corporate Property & Project Co-ordination Division  
Regeneration, Economic Development and Environment Department  
London Borough of Hounslow  
The Civic Centre, Lampton Road, Hounslow, TW3 4DN



4, SWANN COURT, SOUTH STREET, ISLEWORTH TW7 7AN  
(PLAN 1 OF 2)

RTB No.

6240

DATE: 13.11.12